

EXPERIENCE PINELLI

Your Personalised Discovery Visit



PINELLI

VOYAGES

Amalfi

— EXPERIENCE

Enjoy 4 days and nights discovering captivating Cilento and idyllic spots surrounding The Pinelli Estate

We have hand-picked exquisite accommodation, locations and experiences to give you a true flavour of the enchanting south-western Italian Peninsula.





SAVOY
BEACH HOTEL

— STAY

The Savoy Beach Hotel

Luxury accommodation will be at our preferred partner hotel, enviably located close to the beautiful beaches of Cilento, and ancient wonders of Paestum with its Greek Temples.

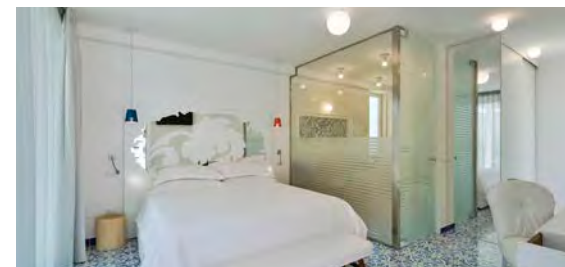
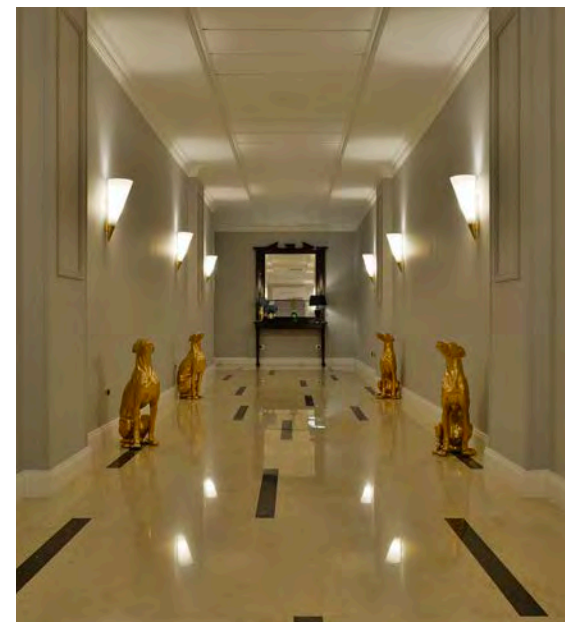
YOUR STAY ALSO INCLUDES

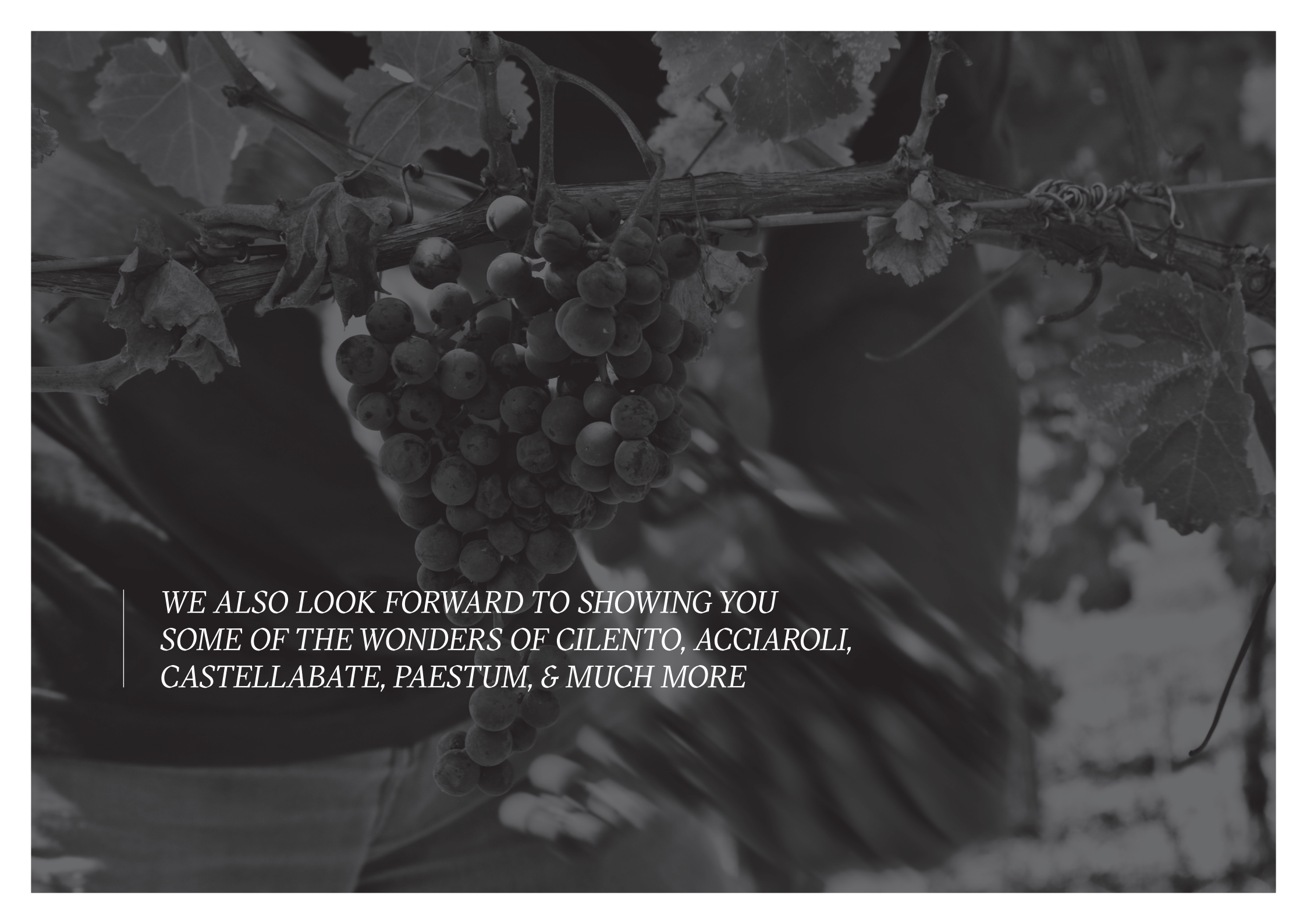
Access to the Spa

Complimentary yoga lesson

*A full-day pass to the private
Beach Club 93, including lunch*

*Wine tasting and lunch at San Salvatore
1988 vineyard*





*WE ALSO LOOK FORWARD TO SHOWING YOU
SOME OF THE WONDERS OF CILENTO, ACCIAROLI,
CASTELLABATE, PAESTUM, & MUCH MORE*

★ ROME

— SEE

Framed by picturesque mountains, lush countryside, and dotted with historical villages - captivating Campania offers miles of unspoilt coastlines, a temperate climate and a wealth of cultural experiences to uncover.

Spectacular mountain ranges, untouched beaches, and some of Italy's top food festivals firmly place Cilento on the cultural map. Its rich history, century-old ruins and quaint villages invite

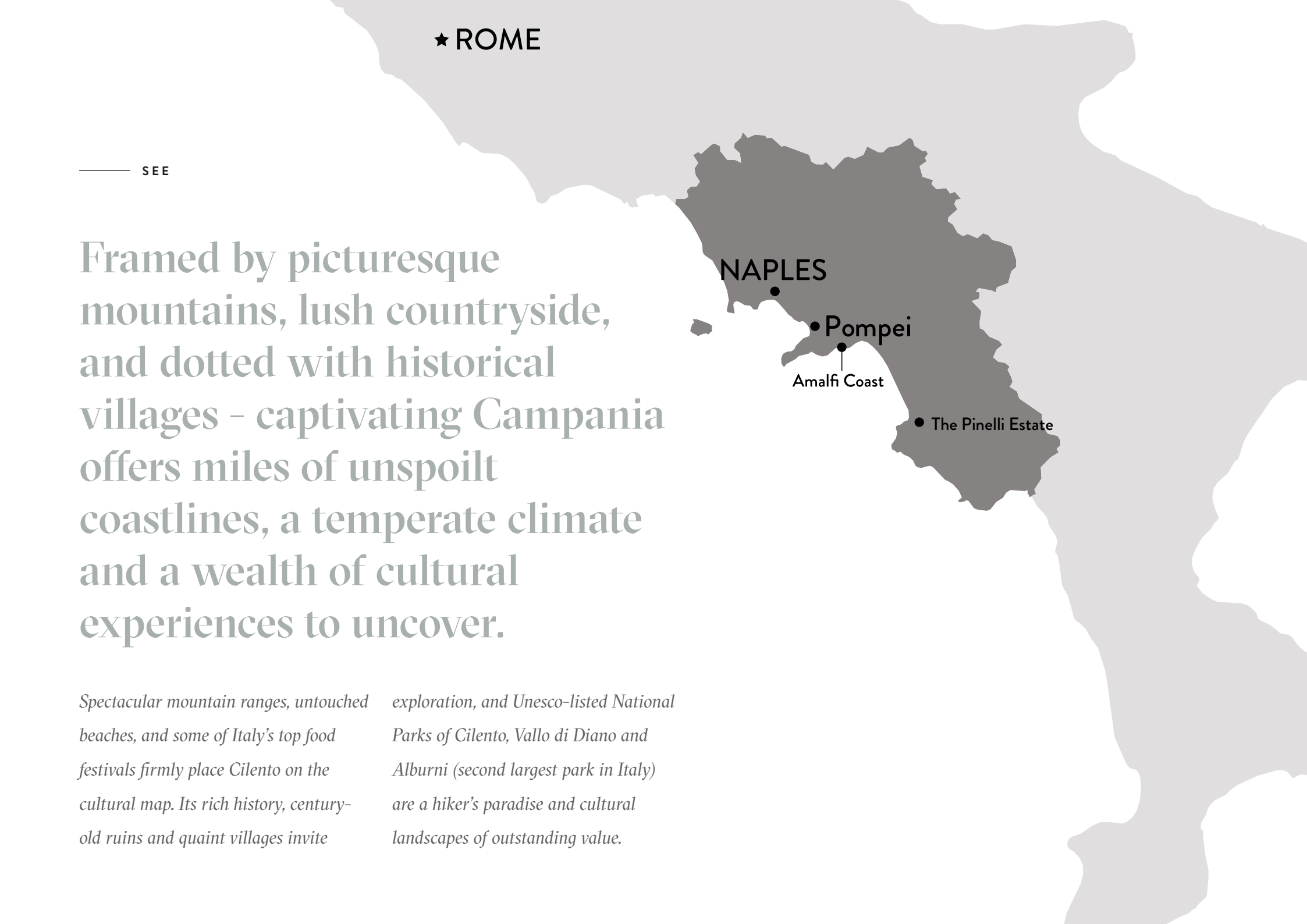
exploration, and Unesco-listed National Parks of Cilento, Vallo di Diano and Alburni (second largest park in Italy) are a hiker's paradise and cultural landscapes of outstanding value.

NAPLES

• Pompei

• Amalfi Coast

• The Pinelli Estate





*WITH THE DAZZLING AMALFI COAST JUST AROUND THE
CORNER, CILENTO REMARKABLY REMAINS ONE OF
ITALY'S TRULY, BEST-KEPT SECRETS*



— PINELLI ITALIAN ESCAPES

Let us take you off the beaten track to discover the real Italy

Your visit includes a half-day guided tour with our Country Manager. You can choose to visit Vannulo and see how the renowned, locally-produced Mozzarella di Bufala is made. Perhaps you prefer to step back in time and view the 3,000-year-old Greek Temples of Paestum, or travel to the stunning mountain village of Campagna? - the choice is yours!





— TASTE

Whether it's a delicious gelato, the famous local mozzarella, or a mouth-watering lunch of fresh-caught fish - savour the exciting flavours of Italy and its much-acclaimed Mediterranean diet

COLLECTIVE OWNERSHIP AT PINELLI

Your Pinelli Discovery Experience offers you a special peek behind the scenes.

During your exclusive half-day preview, you will have the chance to experience first-hand the freedom and luxury Pinelli Voyages can offer, as you glide through the dazzling blue waters of the Amalfi coast. Learn more about Pinelli Collective Ownership - a proven model that has revolutionised how people own and access luxury leisure motor yachts.




*OUR STUNNING RIZZARDI CR50 TOP LINE IS A CLASSIC
ITALIAN DESIGNED AND BUILT MOTOR YACHT WITH A
DYNAMIC PERSONALITY AND A TOUCH OF LUXURY TO
MATCH OUR ELITE-TRAINED PRIVATE DECK CREW*





Vessel Highlights

 3 CABINS (SLEEPS 6)

 3 HEADS (BATHROOMS)

 28 KNOTS CRUISING SPEED/UP TO 40 KNOTS IF DESIRED

 52FT/16M

 UP TO 12 GUESTS

- 3 independently controlled air-conditioned cabins each with toilet & shower
 - master double cabin
 - midships twin cabin
 - aft twin cabin
- Fully air-conditioned
- Berthed at the stunning Porto di Agropoli
- Features 2 expansive sun decks
- Includes Captain & Steward service
- 30NM fuel allowance with ownership
- Food & refreshments available on board

Top Deck

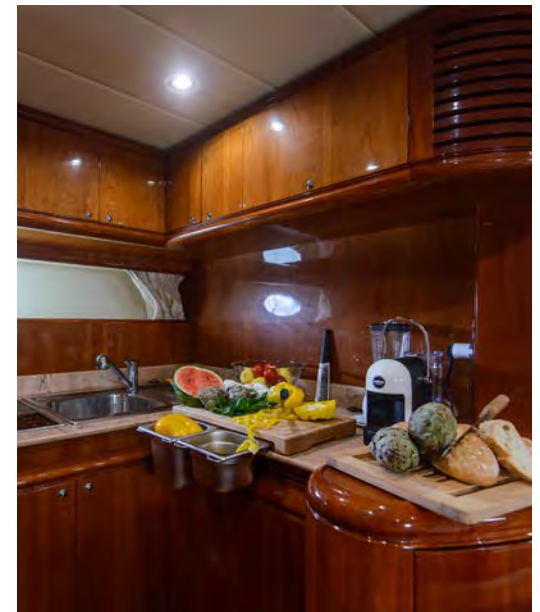
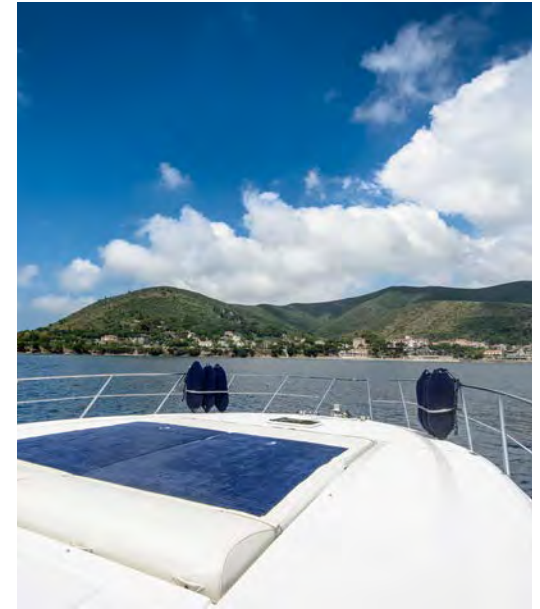
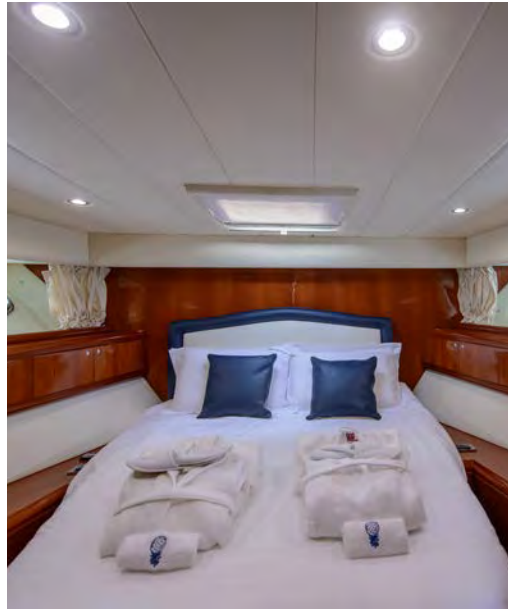
- *Forward cushioned sunbathing deck for 4*
- *Rear cushioned sunbathing deck for 4*
- *aft swim deck with sea ladder and hot/cold freshwater shower*
- *3 person tender with outboard*
- *Seated dining area for 8*

Equipment

- *All new navionics and radar*
- *All new MMSI registered VHF fixed cockpit radio*
- *Handheld VHF radios*
- *12 person registered and licensed liferaft*
- *14 lifevests*
- *Onboard 240V generator*
- *Full lower deck a/c*
- *Flat screen tv*
- *Cabin and saloon radio/cd/usb*
- *Full boat sound system*
- *WiFi*

Toys

- *Full snorkelling equipment*
- *Seabob*





Fractional Ownership

	SHARE HOLDING	PRICE	WEEKS	ANNUAL MAINTENANCE BUDGET
THE PINELLI	1/30	£22,500	1	£1,000

- 5 year ownership with confirmed exit strategy
- Sale of vessel proceeds divided by maximum of 30 owners as share purchase resale (share sale proceed forecasted at £3500 per owner)
- Total share ownership net cost would then be £19,000 or £3,800 for each of the 5 years

Charter Rates

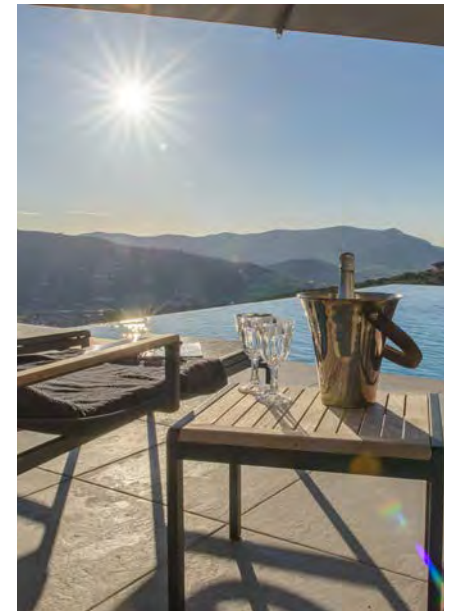
	FULL DAY	WEEK
THE PINELLI	€1,500	€9,000

Charter rates shown are indicative

PINELLI PRIVATE RESIDENCES

We have successfully completed The Pinelli Estate in Campania, comprising ownership in meticulously restored 18th Century farmhouses. Following on from our success in Campania, we've expanded into Puglia, Italy, Marrakech, in Morocco, and now luxury yachts.

Whilst there is no obligation to become an owner, we ask you to give us a half- day for the Ownership Preview. Here at Pinelli, we pride ourselves on the quality and exclusiveness of our homes and yachts, as well as our on-site house staff and yacht crews.



INCLUDED IN YOUR VISIT:

Airport pick-up from Naples International Airport

Transfer to The Savoy Beach Hotel

4 nights' accommodation in a superior room (upgrade option available)

Bio-aperitif at Bar Terrazza

Full-day entrance pass including lunch to the exclusive Beach Club 93

Wine tasting and tour of San Salvatore 1988 vineyard and lunch at La Dispensa restaurant

A half-day preview aboard 'The Pinelli' and Collective Ownership opportunity

Italian Escapes half-day guided tour (upgrade to full-day tour available)

Return transfer to Naples International Airport

Application for a Personal Discovery Visit

We offer a limited number of Personal Discovery Visits each year.

*To allow us to confirm dates available to you, please provide us with the following information by email to **info@thepinelliestate.com***

- *Name/s of visitors*
- *Primary email address*
- *Primary contact telephone number*
- *Address including Country*
- *Preferred month of arrival*

We endeavour to reply to you within 48 hours of receiving your enquiry, with available dates and cost - which is fully-refundable upon the completion of a Collective Ownership Share purchase.

